

LOCATION

108 St Georges Terrace
Perth, Western Australia

CLIENT

Freyssinet

PROJECT MANAGER

Dylan Kavanagh

DESCRIPTION

The Palace Hotel is a landmark three-storey heritage listed building situated in the Perth CBD. Constructed in 1896, it served as a hotel during Western Australia's gold rush era. In the 1980's the building was repurposed to house a bank and offices; today the building houses commercial office space as well as a restaurant on the ground floor.

The newly installed decorative cantilever canopy, which had been installed to the roof level of the building, was displaying signs of water ingress. In October 2019, BUSS Roof Plumbing was engaged to provide a solution to the water ingress issues. It was determined that the heavy steel of the awning, which had been fixed through to the roofline, was allowing water to enter via the areas of penetration.

BUSS Roof Plumbing recommended, and subsequently installed, large custom dry pan flashings. The flashings would eliminate the water ingress issues and provide water tightness to the area.

PRODUCT USED

- Colorbond custom drypan flashings

POINTS OF INTEREST

- BUSS' recommendation was a long term and cost-effective solution; and
- Works were safely completed on schedule and to budget.



Image 1: The heritage listed Palace Hotel

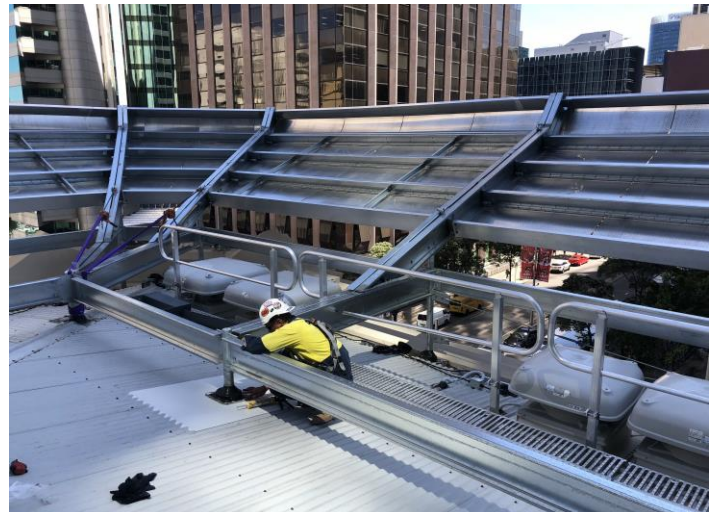


Image 2: Installation of custom dry pan flashings



Image 3: Dry pan flashings will provide long-term water tightness